

exercise session 2

Rachel Leuthold and Moritz Diehl
Wind Energy Systems, Summer-Semester 2018

Albert-Ludwigs-University, Freiburg, Germany



May 16, 2018

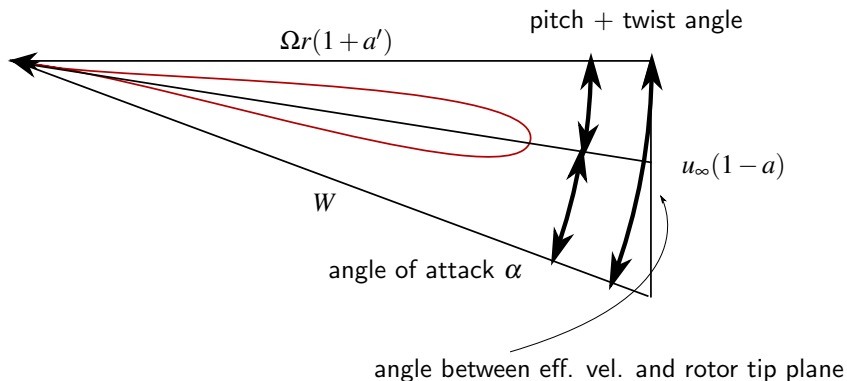
a question from you...



Can generally be assumed that v_b is in line with the chord line?

Can generally be assumed that v_b is in line with the chord line?

No. That's where the pitch and twist come into play.



let's play a game...



concept questions!

to what does the blade (shown) belong?

side photo (hub below), with smoke passing over the blade tip.



A) a turbine

B) a propeller

C) an octopus

Per Rutquist, 2018

to what does the blade (shown) belong?

side photo (hub below), with smoke passing over the blade tip.



A) a turbine

B) a propeller

C) an octopus

Per Rutquist, 2018

another game!



presenting the homework solutions...